

Reprogramming Manual

For the Aftermarket Keycard Reader

PREAMBLE

This manual guides you through the reprogramming of your KeyCard Reader to allow the reading of the new generation of Badges/ KeyCards that equip vehicles (from CLIO IV onwards).

The reprogramming of the KeyCard Reader requires the downloading and installation of a new program in the KeyCard Reader.

PREREQUISITES

- Connect the KeyCard Reader to the PC and check that the Reader is operating correctly with CarteClef ("KeyCard") application.
- The reprogramming of the KeyCard Reader must be performed using the same PC.
- .
- Reprogramming files at your disposal

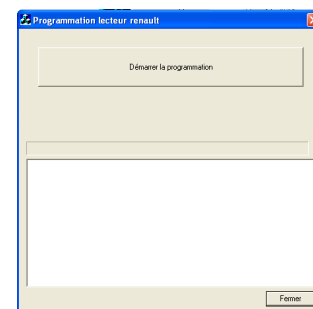
You must have the following files in the folder « Loader » which are in the "Carte Clef" directory, found in the DVD containing the updates of the Reader and the "Carte Clef" Application:

- « **Loader.exe** » : Loader program
- « **Reader.hex** » : File to download to the reader

The reprogramming operates via the USB connection

PROCEDURE DE REPROGRAMMATION

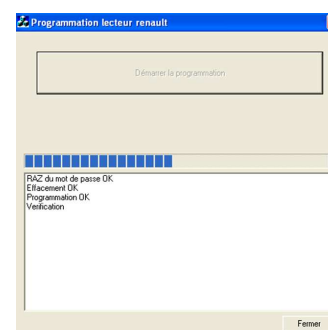
1. Connect the Reader to the PC
2. Start the Application Loader.exe.
3. Click on the button « Démarrer la programmation » (Start programming)



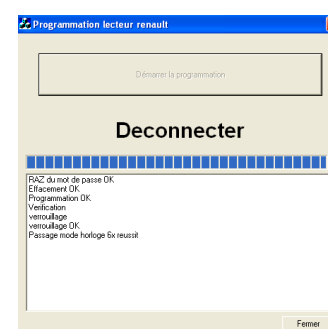
4. When the message « Appuyer sur le bouton Reset » is displayed, insert a pointed object into the hole on the back of the unit and briefly press in order to activate the Reset button.



5. The programming starts



6. The end of the programming is indicated by the message « Deconnecter ».
Disconnect the USB cable to ensure the Reader leaves the programming Mode



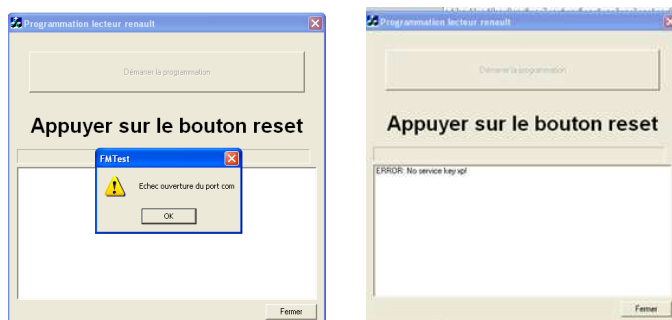
7. Reconnect the cable to the PC

8. Start the CarteClef application

ERROR MESSAGES

- **USB Connection not operational**

Ensure the connection to the reader is good before starting the reprogramming.



- **Error message when starting the application**

Ensure that the KeyCard Reader has been disconnected at the end of programming to ensure the Reader exits the programming mode. The CarteClef application can then be started when the KeyCard Reader is next connected.



- **Switch not operational**

If nothing is displayed in the window, push the button once more, otherwise return the unit to the manufacturer.

